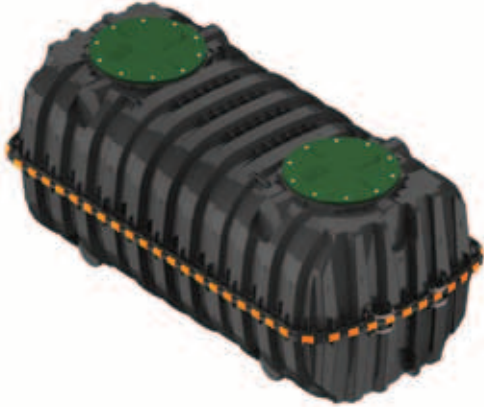


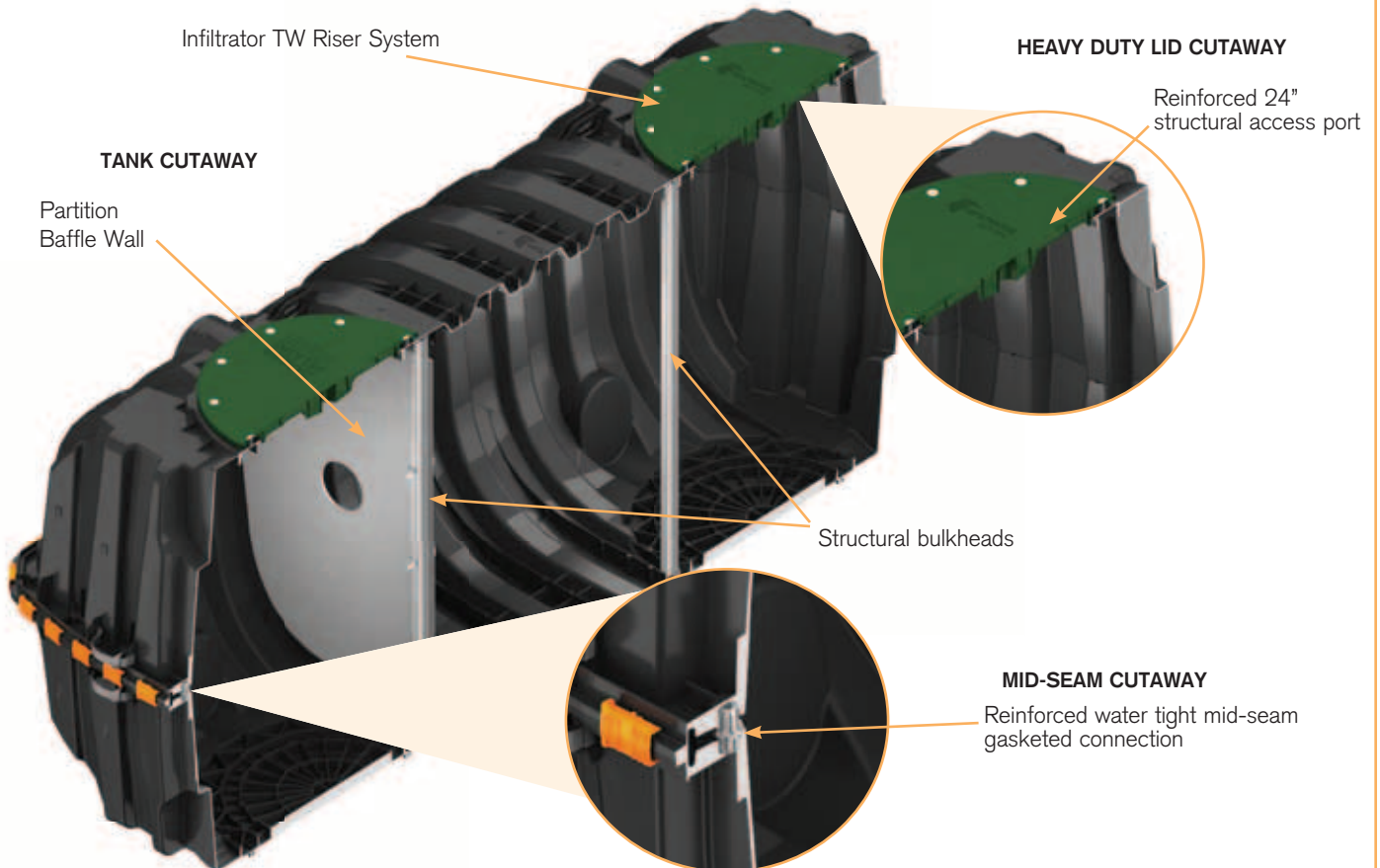


IM-1060



The Infiltrator IM-1060 is a lightweight strong and durable septic tank. This watertight tank design is offered with Infiltrator's line of custom-fit risers and heavy-duty lids. Infiltrator injection molded tanks provide a revolutionary improvement in plastic septic tank design, offering long-term exceptional strength and watertightness.

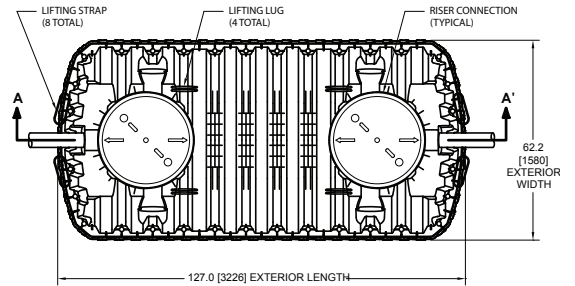
- Strong injection molded polypropylene construction
- Lightweight plastic construction and inboard lifting lugs allow for easy delivery and handling
- Integral heavy-duty green lids that interconnect with TW™ risers and pipe riser solutions
- Structurally reinforced access ports eliminate distortion during installation and pump-outs
- Reinforced structural ribbing and fiberglass bulkheads offer additional strength
- Can be installed with 6" to 48" of cover
- Can be pumped dry during pump-outs
- Suitable for use as a septic tank, pump tank, or rainwater (non-potable) tank



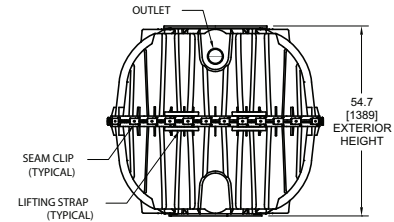
IM-1060 General Specifications and Illustrations



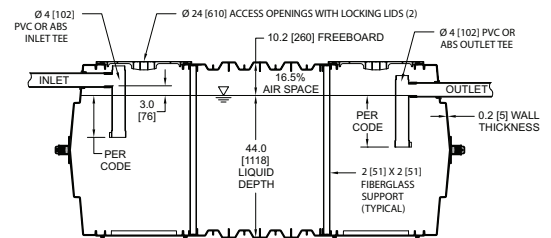
The IM-1060 is an injection molded two piece mid-seam plastic septic tank. The IM-1060 injection molded plastic design allows for a mid-seam joint that has precise dimensions for accepting an engineered EPDM gasket. Infiltrator's gasket design utilizes technology from the sanitary sewer pipe industry to deliver proven means of maintaining a watertight seal. The two-piece design is permanently fastened using a series of non-corrosive plastic alignment dowels and locking seam clips. The IM-1060 will be assembled and sold through a network of certified Infiltrator distributors.



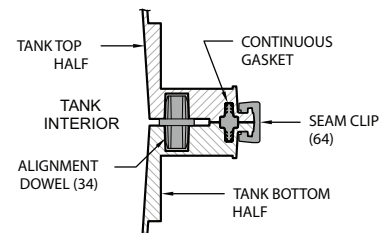
TOP VIEW



END VIEW



SIDE VIEW



MID-HEIGHT SEAM SECTION

Parameter	Units	Value
Working capacity	gal (L)	1,070 (4,050)
Total capacity	gal (L)	1,247 (4,720)
Airspace	%	16.5
Nominal wall thickness	in (mm)	0.2 (5.1)
Length	in (mm)	127.0 (3,226)
Width	in (mm)	62.2 (1,580)
Length-to-width ratio	---	2.3 to 1
Height	in (mm)	54.7 (1,389)
Liquid level	in (mm)	44.0 (1,118)
Invert drop	in (mm)	3 (76)
Fiberglass supports	---	2
Alignment dowels	---	34
Locking clips	---	64
Compartments	---	1 or 2
Maximum burial depth	ft (m)	4 (1.2)
Minimum burial depth	ft (m)	0.5 (0.2)
Maximum pipe diameter	in (mm)	6 (150)
Weight	lbs (kg)	320 (145)



INFILTRATOR[®]
systems inc.

6 Business Park Road • P.O. Box 768
Old Saybrook, CT 06475
860-577-7000 • FAX 860-577-7001
www.infiltratorsystems.com

For technical assistance, installation instructions or customer service, call Infiltrator Systems at 1-800-221-4436